



**THE BUZZ**  
**JULY/AUGUST 2019**

**ISSUE 57**



Dear Readers,

Our Revel Week is not far away and so this Buzz Newsletter is full of information about our special village week of events.

Ric and Sarah who are the main organisers of this event would like to encourage as many as possible to take part in it. Remembering the more classes one enters, potentially the more rosettes and point can be gained. Thus enabling you to be in with a chance of winning the Show trophy.

This also applies to the children's classes.

Also remember a new event for this year which is happening before Revel Week. It's a Knockout as advertised opposite. Its all about the village coming together and having some fun!

**Sheila Cholwill** Editor

E-mail: [sheilacholwill@btinternet.com](mailto:sheilacholwill@btinternet.com)

Telephone: 01288 381350



**Term Time Day Care for 2-5 Year Olds**  
Tax Free Childcare & other vouchers accepted  
Funded places for 3 year olds available (and 30 hours extended entitlement & 2 year old funding, if criteria met)

**FOUNDATION STAGE UNIT  
OPEN ALL WEEK**

**Monday to Friday 9am-3pm**

For more information,  
please call on:  
Bridgerule Primary School 01288 381366  
Or email on [admin@bridgerule.devon.sch.uk](mailto:admin@bridgerule.devon.sch.uk)



**Creative Church**  
for all the family, organised by St Bridget's Church



Wednesdays 4-5pm  
during term time at  
Bridgerule Primary School

All welcome

Story-time  
Arts and  
Crafts  
Games  
Prayer

More information from  
Gemma Fuxes: [gemma.star.82@hotmail.co.uk](mailto:gemma.star.82@hotmail.co.uk)  
or Mother Elizabeth [elizabethmaburke@icloud.com](mailto:elizabethmaburke@icloud.com)

ALL CHILDREN TO BE ACCOMPANIED BY A RESPONSIBLE ADULT



**Glebe House Cottages**  
Est 1985

**Bridgerule Beer & Cider FESTIVAL 2019**

**All Pints £3.00!**

**8 Local Ales & 5 Ciders!**

- 3 Live Bands!
- Hot Food
- Bouncy Castle
- Free Camping!
- Face-paint
- Family Friendly
- Dogs Welcome
- Fun Games

**Fri 12th, Sat 13th & Sun 14th July**  
**Opens 4pm (Live Music from 6.30pm)**

Tickets available now! Adults £4.00 Children £2.00

Glebe House, Bridgerule, EX22 7EW Jay@glebehousecottages.co.uk

01288 381 272 Find us on Facebook 

***Bridgerule Family Fun***  
***It's a Knockout***

**Friday 19<sup>th</sup> July**  
**at 6.30pm**

***Bridgerule Football Field***

**£2 per Adult, Children Free**  
**Children's races maybe separate depending on numbers!**

***Activities are played at your own risk!!!!***

**Please call Paul/Stacey on 01288 381843 to book in your team**

***Light Refreshments & BBQ available on the night***

## BRIDGERULE FOOTBALL CLUB

Under the guidance of Rob Hambly and Mark Piper, the 1st team finished the season with 47 points from 20 games, meaning a 2nd place finish and promotion from the North Devon Intermediate One division. In addition to this, they won the Arlington (League) Cup and wrote history by bringing the Launceston Cup back to Bridgerule for the very first time.

The 2nd team managed by Lee Jolliffe secured an 8th place finish in the Intermediate Two division picking up 20 points from as many games, including some good results along the way.

Looking ahead to the 2019/20 season, the 1st team will be competing in the Senior league for the first time in over 20 years with Rob Hambly and Mark Piper again taking charge. The 2nd team will be managed by Matt and Mike Tape and will begin their 3rd season in Intermediate Two.

At the time of writing, the 1st team have 4 friendly fixtures organised which are as follows:

20/7/19 - Halwill 2nds (H) - KO TBC

3/8/19 - North Petherwin 1sts (A) - KO TBC

7/8/19 Bradworthy 1sts (H) - KO TBC

14/8/19 - Hatherleigh (A) - KO TBC

The club would like to thank all of its players, sponsors and supporters for their efforts during the 2018/19 season, and look forward to welcoming both old and new faces to Vinnicombe Park for the 2019/20 season, which is due to get underway on Saturday 24th of August.





## BRIDGERULE TABLE TENNIS CLUB

Raymond and Marcus have had a good year having been runners up in the North Cornwall Consolation League Cup.

The Team of Alan Quilter, Jay and Nick Brewer had a good season despite not having his regular players and substitutes from the other teams, they turned in a very creditable performance. I am trying to redress the situation so that Alan has a few other players to incorporate into his team which may come from 3 new members; 2 from Bridgerule, Kathy and Scott and Mike from Holsworthy. We also have another team entered in the top division. All local people from Holsworthy which I know they will represent Bridgerule in the spirit that matters to me. They are David Streak, Captain, Peter Freeburn, Steve Cragg and Helen Murgatroyd. We have lost 2 players who have moved to Scotland, Jill and Fran and we wish them well in their new venture.

***The Club makes a donation each year to a local Charity. This year it was Cancer Research UK, Bude and Stratton, which will be used for local trialling of new medicines in our area.***

## THANK YOU very much for supporting the Chapel walk on May 18.

it was perfect walking weather and we all enjoyed the Tamar Lakes with its beautiful scenery and bird song. Thanks to your generosity, we raised £946 which is going towards the refurbishment of the Chapel kitchen.

What a great community effort ! Thank you all again . Hilary Taylor.



We all enjoyed refreshments  
after the walk!

## NEIGHBOURHOOD WATCH NOTES

Is your WI-FI password protected ? Can anyone use it if they are close enough - or parked outside ? Is the password simple - like your house name or just 'password' ? Would you notice someone else using it ? Think on.

How are you with scams ? Any number keep coming up, but it always comes down to the same thing. They want your bank details, or 'need' you to buy gift cards ! What ? What on earth would a business do with gift cards provided by you - except use them just like money !

So please - don't be browbeaten - it's not the police or Her Majesty's Revenue and Customs. They phoned you - you don't play their game.

I've been warned that this even goes for car sales online or agricultural machinery. If they phone you, doubt every word they utter.

Here's another phone number from a leaflet which goes " Need some advice ? We're here for you....". This is Age UK on 0800 169 6565 open every day 8 til 7 or via "[AgeUK.org.uk](https://www.ageuk.org.uk)". They can send you advice literature on money; benefits; mobility; care homes; health and well-being etc.

A reminder of some other sites and numbers. "[actionfraud.police.uk](https://actionfraud.police.uk)" on 0300 123 2040. CAB consumer advice 0345 404 0506. Crimestoppers 0800 555 111.

"[cyberaware.gov.uk](https://cyberaware.gov.uk)" and many more.

If I haven't listed the one you want please phone.

PS sign up for Alerts by going to "[neighbourhoodalert.co.uk](https://neighbourhoodalert.co.uk)"



**John McDougall - Neighbourhood Watch Coordinator**

## ST BRIDGET'S CHURCH SERVICES JULY/AUGUST

**7th July - Song Eucharist**

**4th August Song Eucharist**

**14th July - Morning Prayer**

**11th August Morning Prayer**

**21st July - Song Eucharist**

**18th August Song Eucharist**

**28th July - Revel Service 6.30pm  
at Methodist Chapel**

**25th August Morning Worship**



Following on from a very exciting and successful “Writing Day” last term, with fellow pupils from Bradford and Black Torrington Primary Schools, Bridgerule C of E (VC) Primary School pupils have received many responses from the people whom they admire and who continue to inspire them, from Her Majesty The Queen to Harry Potter author JK Rowling. Recently the pupils received a signed match rugby ball and team posters from the Exeter Chiefs Rugby Club. One of the Chiefs players, Luke Cowan-Dickie has links with Bridgerule through his Grandad Victor, who has lived in the village since 2012. The pupil holding the ball is particularly excited as he and his family are attending Sandy Park at the weekend, to watch their match against Northampton Saints.

### **A BIG THANK YOU FROM PAT AND ALEC JOHNSTON.**

Since returning home following his replacement knee surgery on May 2<sup>nd</sup> we have been overwhelmed by the number of phone calls, emails, cards and flowers from “well wishers”. The offers of help with transport and the support that we have received from many friends and neighbours has vastly contributed to Alec’s recovery and rehabilitation and has been greatly appreciated by us both. We would also like to mention the “Pick me up” community transport which has taken us to hospital/physio appointments and last but not least thanks to Scott and Cathy for the “magic oil”!

JILL AND FRAN BID A FOND FAREWELL!!

Farewell message to Bridgerule friends from Islay. Well, we have arrived on the Isle of Islay also called the Queen of the Hebrides which is the Southernmost Hebridean Island off the West Coast of Scotland, inhabited by 3,228 people plus two!



Islay is mainly known for its 10 Whisky distilleries which provide most of the jobs and tourism on Islay, however it also has a links golf course called The Machrie which is also unique as most links courses run alongside the sand dunes. The Machrie however crosses over the dunes resulting in the many blind spots that the course is so well known for.

The Island is also popular with fishing enthusiasts with its various brown trout lochs and salmon rivers and also for twitchers as Islay is home to many bird species such as the wintering populations of Greenland White-Fronted and Barnacle Goose, we are lucky enough to have a pair of Hen Harriers not far from the bungalow which are one of the UK's rarest birds and are protected by law, sightings of Sea eagles and Golden eagles have been reported so we hope to be lucky enough to track those elusive birds down too.

For Historians The Kildalton Cross a monolithic high cross AD800 is considered the finest surviving Celtic cross in Scotland, more recently the American Monument built on a 429 feet high cliff in 1920 to commemorate the loss of two troop ships in the 1918 where 630 mainly US servicemen lost their lives and subsequently were buried at Kilchomen military cemetery, the Carraig Fhhada lighthouse 1832 which is also a tourist hot spot for it's beautiful setting and of course the wonderful beaches of clear waters and golden sand. There is a 6 mile long stretch of a sandy beach which we overlook that we can rush down to and body board the waves if they look good!

On a personal note we have settled into our 1970s bungalow which we hope to modernise eventually, it has a lovely conservatory where we can sit and watch the sun go down with a tipple of local gin's either the more known Botanist which is distilled at one of the whisky distilleries called Bruichladdich, Nerubus gin near Port Charlotte, (Ben and Brenda this is one for you!) and our favourite Lussa which comes from Jura.



It's here in the conservatory where we feel fortunate to be here for the space, the views and the freedom but also where we remember how lucky we were to have stumbled across such a wonderful and gregarious village after 20+ years in France, to be welcomed so generously by everyone, to have such fabulous neighbours and to have made lasting friendships within the village.

We would like to thank you all for your kindness and friendship, we miss you and would love you all to join us, it's really not that far! flights from Exeter to Glasgow and on to Islay or from Exeter to Edinburgh and then on to Islay flights every day! and like Bridgerule the climate is mild as its made better by the gulf stream so no need to think that its that cold up here just the usual wind from the west coast which also keeps the midges at bay! Finally for those who wondered if it might be a bit quiet up here there is a whisky festival on at the moment with open days at the 10 distilleries with free drams, music and dancing at each one!! we are struggling to keep up!

Once again all our love Bridgerule we will still be reading the Buzz and will let you know when we come and visit.

**Lots of Love Jill and Fran and Tilly too xx**



**SUNSET FROM BUNGALOW**



**LIGHTHOUSE AND FERRY**



**BRIDGERULES BUZZING COMMUNITY = facebook page**

**'If you wish to promote an event in our village...  
want something ... or maybe have something for sale'**

**Then just let Stacey Hillier Cholwill know and she will upload it  
on to our face book page'.**

**Stacey is on 01288 381843 or email her on [shillier357@yahoo.co.uk](mailto:shillier357@yahoo.co.uk)**

## REMEMBERING CINDY NEEP

Cindy was born in September 1946 to parents Dorothy Joan & Harold Feldwick Browne, in Harrow in London. Cindy's grandfather Maurice Browne was a Chelsea pensioner and her great grandfather Reginald Skelton served on the Discovery Expedition to the Arctic as Captain Scott's chief engineer, both of which she was extremely proud.

Cindy began her education at Harrow proprietary school for girls, she held her education in high regard and was very proud of her achievements at school in which she excelled. As a child Cindy suffered pneumonia and for this reason Harold and Dorothy moved out of London to Billericay in the suburbs of Essex. Cindy then went on to study at Southend College and used to travel on the train from Billericay to Southend every day, wearing her uniform, a blue gingham dress and straw hat.



On leaving school Cindy began her career in London at a firm of solicitors and then worked for British Road Services on the telex network, she then went on to work in Carnaby Street in London. Although not a feminist Cindy was very supportive of women rights and particularly women in work and was determined to have a successful career.

When Cindy was 15 she met Roger Neepe, they dated for four years and were married at Great Burstead Church in Billericay on 17<sup>th</sup> September 1966, Cindy aged 19 and Roger aged 22.

They rented their first home in Ingatestone and 2 years later in 1968 bought their first house in Colchester in Essex. Their children Chris, Simon and Michelle, born in 1969, 1972 and 1974 respectively soon came along, followed by James in 1984.

Cindy was always very community spirited and was involved in many groups and social activities throughout her life. She belonged to the Red Cross charity and was very involved in the group encouraging people, young and old alike to learn first aid and get involved with the charity

Cindy was also a member of the 'young wives', which was very similar to the WI.

They would meet to socialise, learn new skills and invite guest speakers to their meetings whilst leaving their husbands at home to look after the children. Cindy loved to socialise and there were many parties and dances in the village hall, (husbands were invited!) dancing to Abba, The Beatles and Elvis, the floor would literally be bouncing and steaming from all of the stomping feet.

Cindy and Roger enjoyed many happy years in Colchester until 1986 when they made the decision to up sticks and move to the Westcountry. The move was the dream of Cindy and her father for many years, Harold was a Plymouth boy and always wished to return home, Cindy and Roger felt that this would give a better way of life for themselves and for the whole family. The intention was to move the whole family, along with her parents, but sadly her father passed away a few years before the move. Despite this set back Cindy & Roger were determined to go ahead and moved with Dorothy in to Tamar House in Bridgerule, in September 1986.

Once settled Cindy began work at Holsworthy Community College where she worked until 3 years ago. She had many happy years at the school and enjoyed her work immensely. She worked very closely with the deputy head Mark Foster for a number of years and built close relationships with the staff and pupils. She had a particular way with the more 'difficult' children and was able to enhance their school life in a positive and encouraging way. She loved her career and was very successful.

Cindy had been honorary treasurer of Revel Week for a number of years, always ready to commit to the organisation of our special week. Cindy, Roger and their family always knew that when Revel Week came along mum would like them to help with the BBQ. In remembrance of Cindy the Revel Committee are to purchase a new trophy for the Children's Class at the carnival and are naming it "Cindy Neep Remembrance Cup". Cindy was also a passed member of The Village Hall committee and always shown a keen interest in the hall's latest refurbishment.



The Maltesers, alias, Cindy, Roger, Kevin and Susan Norton were a regular team entering The Bridge Inn Quiz Nights. Cindy also enjoyed regularly attending Coffee club mornings and going with friend Susan on the club's coach trips.

Enjoying the chosen places we visited, the company and taking part in some retail therapy; coming home with purchases, sometimes for herself and sometimes it was plants bought for the garden she loved and took pride in.

Open Gardens is not happening this year but Cindy had played a major part in helping to organise them over the last 10 years, raising large amounts of money for The Devon and Cornwall Air Ambulance. Cindy and Roger opened their garden and home to serve coffee and lunches for those attending and for the benefit of the charity. Again, with the help of their family.

Cindy and Roger together also readily supported other local events held by other committees in our village.

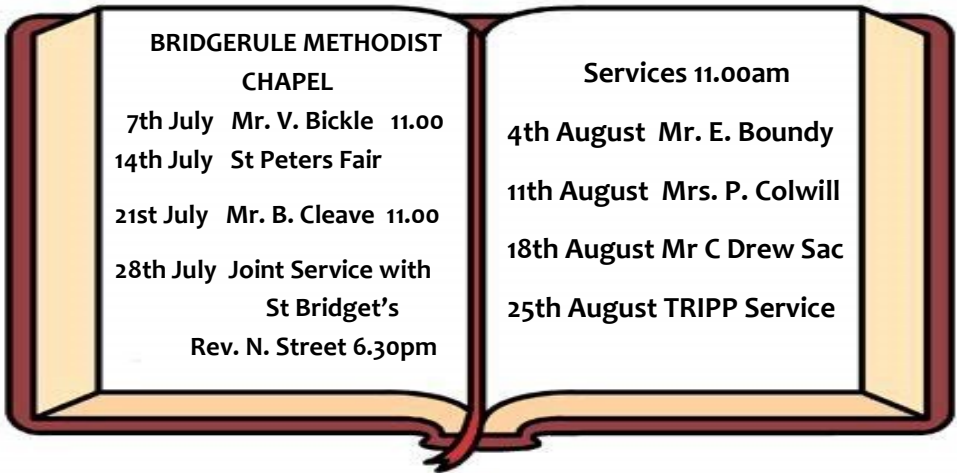
For many years Cindy was a governor at Bridgerule primary school, long after her children had moved on to secondary school and only stood down to take on more involvement at Holsworthy

Cindy's great passion was her garden and was never happier than when she was pottering around in her greenhouse or getting her hands dirty in the veg patch. She was very proud of her garden and worked extremely hard to keep it blooming and looking its best for the annual open gardens. Once the hard work was done, she loved nothing more than sitting on the wall in sunshine with a cup of tea or a glass of wine just enjoying the garden. Cindy's belief was that 'time you enjoy wasting is not wasted time' and who could disagree with that?

Cindy was very family orientated and she was definitely the head of the Neep family. She had so much time for all her children but was especially close to her grandchildren. Living right next door, Abi and Millie popped in to see Nana every day and Abi in particular would spend hours just talking about anything and everything with her Nana. Cindy was so much more than a wife, Mum and a Nana she was a friend and confidant. Logical, practical and extremely intelligent, everyone, family or friend, were able to go to her for advice and guidance. Cindy will be sadly missed by her family, friends and everyone who knew her, but all are very happy and grateful to have had her in their lives.

***Sheila wishes to thank Roger and his family for the Spotlight on Cindy and for the privilege of including some of her thoughts when asked by the family to speak at the funeral of Cindy on behalf of the our village.***





### COMPLAINT!

**As Editor of the Buzz I try to be inclusive of all requests received from residents for items to be published . Space does not allow me to elaborate but:**

In an email received a few days ago a resident says that dogs are constantly barking in the village over a long period of time, to the point of being a nuisance. It also recommends that landlords and tenants in this area of our village should be more responsible for their properties and homes.

### THANK YOU BRIDGERULE

Little did we know that following a successful hip operation Chris was going to suffer a stroke!

But

### Wow ! What a Village.

A huge 'THANK YOU' to everyone who has helped us over the last few weeks.

A heartfelt thank you to all the kind people who have done shopping for us - taken Rose shopping - taken Chris for doctors and hospital appointments and sent and phoned with kind wishes and cards.

Our house sale has now thankfully gone through and again we are indebted to our friends who have helped us to move into our temporary home in the village.

### We say again -

What a lovely village - what kind, lovely people. Back in Gloucester this just wouldn't have happened - Bridgerule is very special.

# Smart Kids use the Internet

## A simple guide to help keep kids safe online



Stay **SAFE** when using the internet.

Don't give your ASL, ADR or PN to PPL, or websites you don't know and never GNOC.

60% of 14 year olds have visited websites not intend for kids.



Never arrange to **MEET** strangers

Never arrange to meet PPL you've never met before, **No matter how genuine they seem.**

40% of under 18 year olds have encountered paedophilic activities.



Don't **ACCEPT** emails or downloads

If you receive emails, images or videos which make you feel uncomfortable, or you know to be a bit "SUS", tell a P or T.

15% of under 16 year olds have been encouraged to meet a stranger.



Only open **RELIABLE** emails or files

Never open emails or files from unknown PPL or sources. These are often from criminals who will steal your personal information.

33% of under 18's had personal data shared with, or given to strangers.



If unsure **TALK** to a Parent

If you are encouraged to access a "SUS" website or give ASL, PAP or PN, Tell a P or T.

**Nofix-Nofee Computer Repair Services**  
**Free telephone helpline 01288 381061**

## ENGLISH TUITION and WRITING SERVICE

Experienced tutor based in Bridgerule currently has spaces available for private tuition.

- English Language and Literature up to A Level
- French to GCSE Level
- English as a Foreign/Second Language
- 11+/Entrance exams (including Maths/Verbal and Non-Verbal reasoning)
- Proofreading/editing essays or theses
- Help with written work/forms/CVs/letters etc

Bespoke classes in your home.  
£25/hour, free initial consultation.

Please contact Katie 07976 599275 or [katie\\_beat@yahoo.co.uk](mailto:katie_beat@yahoo.co.uk)

Keep an eye on the village website

[www.bridgerule.co.uk](http://www.bridgerule.co.uk)

## Why not host your next party at:



**Birthdays!**  
**Anniversaries!**  
**Christenings!**  
**Kids Parties!**  
**Garden Parties!**  
**Pool Parties!**



Contact Jay

01288 381 272

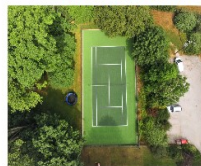
[jay@glebehousecottages.co.uk](mailto:jay@glebehousecottages.co.uk)



6 Luxury Self Catering Cottages

Swimming Pool, Tennis Court, Formal Gardens,

Cellar Bar, Games Room & Plenty more!



10% discount for friends and family of local residents.

01288 381 272

[www.glebehousecottages.co.uk](http://www.glebehousecottages.co.uk)

[jay@glebehousecottages.co.uk](mailto:jay@glebehousecottages.co.uk)

## SHEILA'S MENTIONS

### BIRTHDAY WISHES:

Hannah South 3rd July

Audrey Bewes 1st August

Linda Weekes 5th August

David Hale 14th August

Raymond Bewes 15th August

Linda Goodman 29th August



Our thoughts are with **Roger Neep and his family** on the sudden death of wife, mum and nana Cindy. Michelle and James together with Abi paid a wonderful tribute to their mum and nana.

Get Well wishes to **Chris Hitchings** on his recent stay in hospital.

We give a warm welcome to any family that has recently move into our village.

**Colin and I** would like to thank everyone for their kind wishes on the occasion of our Golden Wedding Anniversary. Thank you for the gifts we received and a special thankyou to Paul and Stacey for the thought put into our celebration party at Holsworthy Golf Club. We had a wonderful evening amongst our

family and friends. with Johnny Cowling taking charge of the entertainment. Instead of presents we requested donations to our favourite charity, Little Harbour and we now have had **£900**. Thank you so much. **Colin and Sheila Cholwill**

*Thank you to Emily Fenwick for icing the cake so lovely and our Harry who helped to make the evening so special.*







## **BRIDGERULE REVEL WEEK— 28TH JULY- AUGUST 3RD**



**Lenny**

**Harry**

Ella Cholwill (on the right of above photo) is our Revel Queen for 2019. Ella was born in Bude 11 years ago and has lived in Bridgerule since the age of 1. She is in her final term at Bridgerule Primary School before transferring to Budehaven Community School. Ella is very much looking forward to becoming the Revel Queen and representing the village she lives in.

Ella loves netball and has recently won an award for best effort at Bude Netball Club. She also enjoys art and craft.

**Attendant:** Ella has chosen Phoebe Lucas to be her attendant. Phoebe is 10 years of age and has lived in Bridgerule since birth. Phoebe enjoys gymnastics, surfing and sleepovers at her friends.

**Page:** Harry Cholwill is a brother to Ella. He is 5 years of age and attends Bridgerule Primary School. He enjoys riding his quad bike and playing football.

**Page:** Lenny Mounce is a cousin of Ella and Harry and attends Bridgerule Pre-School and will be moving up into Bridgerule Primary School in September. Lenny lives in Bude and loves Rugby.

## **WEEK OF EVENTS**

### **Sunday July 28th    CROWNING OF REVEL QUEEN**

Miss Ella Cholwill

Village Hall 3.00pm

Followed by Cream Teas, Sideshows, Stalls and Raffle

**United Service at Bridgerule Methodist Chapel 6.30 pm**

### **Monday July 29th**

#### **WINE AND WISDOM**

Village Hall - To Start at 7.30pm

Teams of up to 6 - £4 per person

Please enter your team to Sheila 01288 381350

### **Tuesday July 30th**

**OPEN REVEL SHOW- Entries 12.00—2.00pm**

**See Schedule opposite and over page for details**

**FUN DOG SHOW 7.00pm Village Hall (See class Schedule)**

**Also Viewing of all SHOW ENTRIES and PRIZE WINNERS**

### **Wednesday July 31st**

**RAMBLE** with Tractor/Trailer Ride - Village Hall 6.30 pm

Followed by Hog Roast/BBQ - Licensed Bar

Please wear Wellies

Children must be accompanied by an adult

### **Thursday August 1st**

#### **PRIZE BINGO**

Village Hall - Eyes down 8.00 pm

### **Friday August 2nd**

#### **SKITTLE TOURNAMENT**

Mixed Team of 4

Licensed Bar applied for and light refreshments available

Please enter your team with Audrey 01288 381402 or Sheila 381350

**FAMILY CLASSES:**

Bridgerule in Bloom - Home Assembled **HANGING BASKET**

**SCARECROW COMPETITION** - Your choice of Idea

Your Hanging Basket and Scarecrow will be judged from your home so please

Ensure you **ENTER BY INFORMING** Sarah & Ric Hallett 381568

**REVEL WEEK OPEN SHOW SCHEDULE**

PLEASE REMEMBER ONE ENTRY PER CATEGORY

ENTRIES ACCEPTED 12.00—2.00PM

**CHILDREN'S CLASSES**

Decorated Pebble 4 Classes 2-4, 5-7, 8-11, 12-16 years

Painting/Drawing - Any Subject—Any Medium up to A3 size. All age groups

Homemade Carnival Crown 2-4, 5-7, 8-11, 12-16 years

Painted Paper Aeroplane—Test flight by Judge on Show day—All age groups.

**Baking**

Victoria Sandwich Aged 8 - 11 and 12- 16 years.

Carnival Themed Decorated Biscuit Aged 2-4 and 5-7 years.

**Arrangement**

Miniature Garden in a seed tray not exceeding 38cms x 24cms.

Classes 2-4, 5-7, 8-11, 12-16 years

**ADULTS CLASSES:****Baking**

Victoria Sandwich (Sandwiched by Jam only)

4 Cheese Scones

4 Fingers of Plain Shortbread

**Home Grown Produce:** *All entries placed on a paper plate.*

3 Potatoes on a plate

3 Onions on a plate

3 Carrots on a plate

3 Runner beans on a plate

3 Beetroot on a plate

3 Tomatoes on a plate

3 Vegetables same variety of your choice on a plate

A Whopper—Large Vegetable grown by you

Potato grown in a pot no bigger than 12"; brought to the show for the Judge to weigh the Crop of potatoes it has produced.

PLEASE NOTE

MORE SHOW CLASSES

ON NEXT PAGE

## BRIDGERULE SHOW SCHEDULE CONTINUED - ADULTS

### Art

Drawing or Painting unframed—Any Medium Up to A3 size.

**Floral Arrangement:** A Celebration Theme No larger than 12" x 12".

### Craft Fabric Section:

Knitting/Crochet - Hand made Baby Cardigan

Needlework - Stuffed Toy

My Craft/Hobby - Something you have made but not entered in the other craft fabric section.

## CARNIVAL DAY

SATURDAY 3RD AUGUST

### Tableaux

Children's = Humorous = Original

**Fancy Dress** = Children's & Adults

**Classic Vehicles - 3 Trophies This Year**

Cars = Tractors = Commercial

### Visiting Queens

All Entries To form in The Ham

From 6.00pm

**VEHICLES TAKING PART MUST HAVE  
HEALTH & SAFETY FORMS FILLED IN  
AND IN VEHICLE**

Available from 01288 381350

Procession 7.30pm Prompt

Led by Hatherleigh Silver Band

Morris Men Group in attendance

BBQ - SIDESHOWS - RAFFLE

Individual Skittle Competition

After Procession Money Prizes

**Any Enquiries 01288 381350**



### CLASSES:

Best Pedigree

**Best Crossbreed**

Best Puppy (up to 1 year)

**Best Veteran** (7 years and over)

Best Rescue Dog

**Most Handsome Dog**

Prettiest Bitch

**Dog that looks most like its  
Owner**

**Waggiest Tail**

Best 6 legs

**Most Appealing Eyes**

Fastest Bonio Eater

**Best Child Handler**

Best Fancy Dress

### BEST IN SHOW

### And RESERVE BEST IN SHOW

No CC or RCC or Junior Warrant Winners  
to be entered at the show.



## HOMEOPATHY AT WELLIE LEVEL



Teaching the responsible use of homeopathy on the farm

**HAWL 3-Day FARM HOMEOPATHY COURSE DEVON 2019**

Award winning Farm Homeopathy Course now in its 18th year,  
sponsored by HRH The Prince of Wales

We are delighted to announce that for the first time in many years, we are bringing our award winning course to DEVON this Autumn.

The course will be held at a farm at North Tamerton for Day 1 and Bridgerule (EX22) for Days 2 & 3

The dates of the course are:-

Day 1 Sept 18th Day 2-Oct 9th Day 3- Oct 30<sup>th</sup>

Day 1 introduces homeopathy as a tool to use routinely within the farmer's year.

Day 2 looks at the problems associated with young stock. Farmers report success in using remedies in these situations, often while they are waiting to see what develops from early symptoms.

Day 3 deals with older animals and chronic conditions. We look at ways of helping the 'poor doer', the animal which is not quite right, or those positive early action when the problem is not well enough established to need the vet.

All days are run by homeopathic vets and/or homeopaths with many years of working on farms.

Email Heather ([scotlandfm@yahoo.com](mailto:scotlandfm@yahoo.com)) for further information and application form

# Terri's Driving School



**FULLY QUALIFIED GRADE A  
DVSA APPROVED DRIVING INSTRUCTOR**

- Pass+
- Motorway lessons
- Flexible hours (weekends/evening)
- Female instructor
- Dual control car

Call Terri on  
**07557 983760**

[www.terrisdrivingschool.co.uk](http://www.terrisdrivingschool.co.uk)



## No Transport? Need a pickme-up?



### Ring & Ride

- Door-to-door service for all ages
- Wheelchair & scooter accessible

### Cars for Care

- Door-to-door service
- Times to suit your appointments
- 45p per mile

### Here for Hire

- Mini Bus Hire for Community Groups & Charities
- £50/day - £30/evening
- Self drive

Call

**01409 259001**

[office@holsworthyrruraltransport.co.uk](mailto:office@holsworthyrruraltransport.co.uk)

The Carroll Suite, Holsworthy Memorial Hall, Holsworthy EX22 6DJ

## Holiday homes from £29,995



**Limited  
pitches  
available**

To find out more pop into Reception, call 01288 381 404 or visit [hedleywood.co.uk](http://hedleywood.co.uk)

## Part exchange your tourer for a holiday home at Hedley Wood



**Holiday  
homes from  
£29,995**

To find out more pop into Reception, call 01288 381 404 or visit [hedleywood.co.uk](http://hedleywood.co.uk)

**PIANO LESSONS**



WITH **AMY PUTT (ARSM)**

BASED IN BRIDGERULE  
EMAIL: AMY.PIANOLESSONS@HOTMAIL.COM  
TEL: 01288 381 802 MOB: 0746 058 6936

**DENISE WELLINGTON FUNERAL SERVICES**

DIP FD

*Independent, Compassionate & Caring*

**Bereavement Care    Memorials    Pre-Paid Funeral Plans**

**24 hour contact**

Tel: **01288 359277**

Thornelea   St.Anne's Hill   Bude   Cornwall   EX23 0LT

**[www.denisewellingtonfunerals.co.uk](http://www.denisewellingtonfunerals.co.uk)**

enquiries@denisewellingtonfunerals.co.uk

Golden Charter 



Mobile 07493 047597    Tel. 01409 211635

Professional Window & Gutter Cleaning

Brett's

**Gleaming**

**Glass & Gutters**



Brett Debell, Chapmans Farm House, Chapmans Well, PL15 9SG.

**Water Fed Pole Window Cleaning**

**System using**

**Heated Purified Water**

**Gutter Cleaning** ★

**Soffit & Fascia Cleaning** ★

**Available to clean**

★ **indoor windows** ★

**All work carried out from ground level and fully insured**

# Sam Edwards & Co.

GoodGarageScheme.com  
for a garage you can trust

Registered Member

MOT TESTING STATION



- ✓ Very Competitively Priced Tyres
- ✓ Class 4 MOT Centre
- ✓ Servicing & Repairs
- ✓ Free Fluid, Battery & Tyre Checks
- ✓ Exhaust Systems
- ✓ Fault Diagnostics - All Makes
- ✓ Insurance Work
- ✓ Air Conditioning Service
- ✓ Free Collection & Delivery or Courtesy Car

**CALL NOW; 01288 352008/07944 487898**



**Opening Times;**

**Monday-Thursday; 08.15-17.00 Friday; 08.15-16.00**

**Ocean View Road, Bude EX23 8NH**

**[www.samedwardsgarage.co.uk](http://www.samedwardsgarage.co.uk)**

**YOUR RELIABLE LOCAL GARAGE**



## Lufflands Caravan Park

*'Peace & Tranquillity in the Heart of  
the Beautiful Devon Countryside'*



Our family owned and run exclusive caravan park offers the personal, friendly touches that make it your home from home!

**Catering Exclusively for: Holiday Home Ownership, Holiday Home Hire &  
Annual Touring Caravan Pitches  
Cosy Bar catering for guests & visitors**

**Available for small functions**

**Email: [maria@lufflands.com](mailto:maria@lufflands.com)**

**[www.lufflands.com](http://www.lufflands.com)**

**Tel: 01409 241426**

**Solden Cross, Holsworthy, Devon, EX22 7PJ  
(Between Holsworthy & Bradworthy)**



# M&S Fencing

## 01288 381311

**AGRICULTURAL, EQUESTRIAN & GARDEN**

**Competitively priced fencing**  
**FREE QUOTATION**



**Covering DEVON & CORNWALL**  
**Contact Matt - 07786228162**

**OUTSTANDING IN THE FIELD**





**Julia's**  
**Holistic Treatments**  
For Mind, Body & Soul

Julia Trayford  
A Holistic Therapist with ITEC Qualification

juliatraylor@gmail.com  
01288 381680 or 07990 554370

**M.A.G.**  
**DOUBLE GLAZING REPAIRS**

*Are your local specialists for*

- ◆ REPLACEMENT OF MISTY OR BROKEN GLASS UNITS
- ◆ REPLACEMENT OR REPAIR OF HINGES, HANDLES, LOCKS & SEALS

- ◆ INSTALLING LETTERBOXES & CAT FLAPS

Call Mark today for a free no obligation quotation on

**07969 234161 or 01409 253828**

OVER 10 YEARS LOCAL EXPERIENCE



**T: 01409  
253 533**

2 Kingfisher Units  
Holsworthy Ind' Est'  
Holsworthy, Devon EX22 6HL

**WWW.RENEWSW.CO.UK**

**QUALITY WINDOWS, DOORS  
CONSERVATORIES  
SOLAR PV & ROOFLINE**

**Your Local Renewable Energy Specialists**



**Humphrey Pullar**  
**PROFESSIONAL CHIMNEY SWEEP**  
**NACS & HETAS**

Full Brush and Vac Service    Birds Nests Removed

Smoke Testing

Appliance Servicing

Pots, Cows and Guards Fitted

Tel: 01409 240138

Mob: 07984406290

email: humphreysweep@mac.com



## Little Munchkins Childminding



Care & education for 0-5 years

Funded sessions available for 2, 3 & 4 year olds

Opening hours: 8.30am - 5.30pm (Tuesday to Friday)

Childcare vouchers & tax free childcare payments accepted

Contact Lou on 01288 381813

or e-mail [loucooper2010@hotmail.co.uk](mailto:loucooper2010@hotmail.co.uk)

**J&P PLUMBING HEATING**

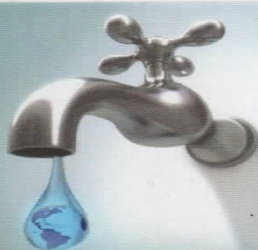
**&  
Home Maintenance**

Telephone Paul:

**01288 381085**

07500876642

07500708650



**24**  
hr

Call Out

**Oil Boiler Service and Repairs**

## JEWELLS CROSS SERVICE STATION AND RED POST GARAGE

Servicing - MOT - Testing - Repairs - Bodywork Break-down Recovery - Comprehensive Accessory Shops  
Car Wash - Self Service Petrol & Diesel at Jewells Cross

Self Service Gas at Red Post

Jewells Cross Tel: 01288 381770



**Mutley Crew Dog Club**

**Bridgerule Village Hall**

Kennel Club Listed Club doing the Kennel Club Good Citizen Dog Scheme.  
Obedience and Rally Obedience,

Tuesday Evenings – Puppies and Beginners – 7- 7.45 p.m

Advanced 8.– 8.45 p.m, Rally from 9.00p.m.

Hoopers training also available, please phone for information.

Contact Christine 01288 381104 or Margaret 01288 352427

## J.J. LOGS & KINDLING TRANSIT TIPPER LOADS

Barn stored pre-cut lengths  
of 9" or 12" long logs  
Hardwood /Softwood  
Full Loads/Half Loads  
FREE kindling with each load  
**TELEPHONE 07765091886**



## AMAZING VALUE!!

### *Mobile Beautician special offers:*

- Pedicures.
- Manicures.
- Toe nail cutting.
- Eyebrow shape & tint.
- Deluxe facials.
- Holistic Massage
- Reflexology

**ONLY £10.00 per treatment.**

*Excellent value - Excellent service - Quality assured.*

Tel: **07970 362 388** (Gift vouchers available)



ARTHUR W. BRYANT  
FUNERAL SERVICE

BUDE  
T/ 01288 352282

CAMELFORD  
T/ 01840 214891

HOLSWORTHY  
T/ 01409 253000

INDEPENDENT FAMILY  
FUNERAL SERVICE

MEMORIAL  
MASONRY

OUR FAMILY CARING FOR YOUR  
FAMILY FOR OVER 50 YEARS

PRE PAYMENT FUNERAL  
PLANS



W/ AWBRYANT.CO.UK  
E/ CARING@AWBRYANT.CO.UK



**HOWDENS**

JOINERY CO.

**BUDE**

**Proud suppliers of**

**Bridgerule village hall kitchens**

Looking for a new kitchen? Come & visit us:

Unit 2, Kings Hill Industrial Estate,

Bude, Cornwall EX23 8QN

01288 942000

[bude@howdens.com](mailto:bude@howdens.com)

TRADE ONLY

NOT TRADE? THEN WE CAN FIND YOU A LOCAL FITTER  
BEST PRICE GUARANTEED ALWAYS



## Man Friday

### Carpenter & Building Services

No Job Too Small

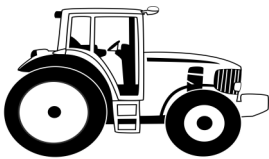
Doors, Flat Pack Kitchens, Bathrooms, Tiling.

Sheds & Decking. Property Maintenance

*Free Quotes—Full Insurance Cover*

Call Dave on: 01288 381507 or 07761 055071

Email: peggyhowmuch@gmail.com



### SHORT & ABBOTT LTD

Agricultural Engineers

Sales, Service & Parts for all  
makes of tractors and  
Garden Machinery

Mill Road, Bridgerule,  
Holsworthy, Devon EX22 8EL  
Tel: 01288 381485

shortandabbott@outlook.com  
www.shortandabbott.co.uk

## DIAMOND

THE CUTTING EDGE IN

PROFESSIONAL  
CARPET, CURTAIN  
& UPHOLSTERY CLEANING

Domestic & Commercial

- Deep Hot Water Extraction Cleaning
  - Deodorising Treatments
  - Dust Mite Removal
  - Leather Cleaning
  - Stain Protection
  - Stain Removal
- Other treatment  
also available

OUR PRICES ARE HARDER THAN A  
DIAMOND TO BEAT

Call us now for a  
**FREE ESTIMATE**

Call Mike on Holsworthy  
01409 254816 or 07855 275088

***Premium Carpets Week st Mary***

Your local flooring specialist dealing with Brittona, Karndean, Coramar, LVT, vinyl, and many more (keeping up to date with all the new trends).

We offer free home visits & meetings at our showroom by appointment only.  
These can be made 7 days a week, and out of working hours to suit you.

**Call us on:**  
**Showroom: 01288341870**  
**Mark: 07947695875**  
**Sarah: 07572654465**

**Or email us :** premium\_carpets@icloud.com  
 2, the old garage, week st Mary EX226UP








## Bellissimo Sensational Cakes

Emily Fenwick Tel: 07502 434441

bellissimocakes@yahoo.co.uk



Birthdays - Hen Days - Weddings - Christenings - Baby Showers

<p><b>Southlands Court</b></p> <p>offers *</p> <p>full time care,</p> <p>respite/holiday care and day care</p> <p>*</p> <p>Peacefully</p> <p>Situated</p> <p>Regular activities and outings</p>	<h3>SOUTHLANDS COURT RESIDENTIAL HOME</h3>  <p>Bridgerule, Holsworthy, Devon EX22 7EW        Tel: Manager: 01288 381631 Tel: Residents: 01288 381642</p>
---	--

## Alan & Julie Pike

### Breezelyn Kennels

Titson Nr. Bude Cornwall EX230HH

Heated Kennels and Cat Chalets

Individual Runs - Large Play Runs  
 Grooming Service  
 Doggy Day Care



**Tel: +44 01288 361680**  
**Email: infor@breezelyn.co.uk**  
**www.breezelyn.co.uk**



# S. D. MARTIN

PLUMBING, HEATING & RENEWABLES

Gas Boilers Inc LPG ~ Oil Boilers / Tanks  
Solar - Ground / Air Source Heat Pumps  
Wet Underfloor Heating ~ AGA'S  
Wood/Multi Fuel Burners ~ Safety Checks

Tel: 01409 240 240

Mob: 07889 270 689

Email: [steve.martin44@btinternet.com](mailto:steve.martin44@btinternet.com)



## GLASS DESIGNS

by Ray Priem

Glassmaker and designer ~ Hand formed and blown glass

Including engraving, sandblasting, glass bonding

Glass restoration commissions welcome

E-mail: [ray@glassdesigns.co.uk](mailto:ray@glassdesigns.co.uk) Tel: 01288 381829/ 07879847568

Website: [www.glassdesigns.co.uk](http://www.glassdesigns.co.uk)

**NOFIX-NOFEE**

Tel: 01288 381061



- \* No Charge for Local Call Out
- \* Home and Office Visits
- \* Virus and Infections Fixed
- \* Weekend Repair Service
- \* Refurbished Systems for Sale
- System Restore & Data Retrieve

Systems  
Repaired  
From

**£25**

**Computer Repair Service**

[www.nofix-nofee.net](http://www.nofix-nofee.net)



## THE BRIDGE INN

General Knowledge Quiz

Every Sunday Evening at 8.30pm

Maximum of 6 per Team

Jammin Nights - Monday & Wednesdays 8.00pm

**BT SPORTS NOW BEING SHOWN**

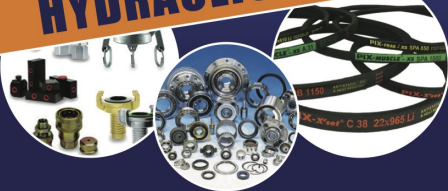
Also **HOLIDAY FLAT TO LET**— Please contact Pam or Gary Bowler

On Telephone Number: 01288 381316

**Hydramatic**  
ENGINEERING SUPPLIES



**NOW MAKING  
HYDRAULIC HOSES**



**www.hydramatic.co.uk**

Unit 4, Bude Business Centre, Kings Hill Ind Estate  
Bude, Cornwall EX23 8QN



**FLOWTECH**  
Heating Services

*Oil and Gas Heating,  
Plumbing and Renewables*

- Oil, Gas & LPG Work
- General Plumbing
- Heating Installations
- Boiler Servicing & Repairs
- Boiler Installation
- Heat Pumps & Biomass



**01288 381530**



**07766 258431**

**www.flowtechheating.co.uk**



**NEATE  
FEET**



For all your foot health  
needs

*Professional foot care in the  
comfort of your own home.*

- \*Painful Callus Reduced
- \*Toenail Clipping
- \*Ingrowing Toenails
- \*Painful Corns Removed
- \*Paddings & Dressings
- \*Verrucae Treatment
- \*Reflexology

**Claire & Simon Neate DIPC FHP**

Qualified foot health practitioners

**07968232344 / 07870508867**

**Edge  
Kitchens**

**In Need  
of a  
New Kitchen?**  
**Look No Further**

**With Premium Grade Cabinets  
Soft close doors and Drawers**

**Scratch Resistant Doors**

**Seamless Work Top Joints**

**2mm Colour match Edging**

**AND**

**CUSTOM MADE CABINETS  
AT OFF THE SHELF PRICES**

**SUPPLYING BOTH TRADE & DIY**

**TOMORROWS KITCHENS**

**YESTERDAYS PRICES**

**Call EDGE KITCHENS TODAY**

**For a free no obligation**

**DESIGN & QUOTATION**

**on 01288 341010**

**HAS YOUR KITCHEN  
GOT THE  
Edge**

## BUDE EYE CENTRE

Tel: 01288 350041  
[www.budeeyecentre.co.uk](http://www.budeeyecentre.co.uk)

Fax: 01288 350140  
[info@budeeyecentre.co.uk](mailto:info@budeeyecentre.co.uk)

- Private & NHS Eye Examinations
  - Contact Lens Consultation
  - Local, Professional and Friendly  
Sunglasses Incl Ranges
  - Large selection of Spectacle Frames
  - Same Day Service Available
  - New Hearing Service available with competitively priced Repair service and half price hearing aid batteries
- Wheelchair/disabled access. 7 Queen Street Bude EX23 8AY



## PAINTERS AND DECORATORS

[dspaintingdecoratingbude.com](http://dspaintingdecoratingbude.com)

Call Dan on 07712436690 or 01288 353 059

Email [dansims48@hotmail.co.uk](mailto:dansims48@hotmail.co.uk)



Planning Permission  
 Building Regulations

Please feel free to contact us for a free  
 no obligation visit and quote

☎ : 01288 352121  
 ✉ : [info@rarowe.co.uk](mailto:info@rarowe.co.uk)  
 🌐 : [www.rarowe.co.uk](http://www.rarowe.co.uk)

## LADIES MOBILE HAIRDRESSER

FOR  
 HAIR CUTS OR  
 SHAMPOO SETS IN YOUR  
 YOUR HOME



CALL  
 HILARY  
 Qualified Hairdresser

Telephone: 01288 381332

## Home & Garden Maintenance Services



Call **Matthew Ward**  
now on  
**07401 216816**  
for a free quote!

**Premier**  
Whitstone Village Stores



Café Lounge Bar

Tel: 01288 341 444 for the latest info find us on FACEBOOK

### Have you tried our Café Lounge Bar ?

Coffee and light bites all day everyday

Bar open til 9pm - Saturday breakfasts from 8 - 1

### Sunday Carvery Eat in or take away midday til 3pm and 5pm til 7pm

**Every Sunday**

"rated excellent on tripadvisor"

Freshly baked Pastys available everyday from 7am

Fresh bread & cakes

Wide range of fresh and chilled foods

Extensive off licence including over 20 local Gins

Barista quality Coffee to enjoy in or take away

Free Wi Fi Venue available for meetings, parties, wakes etc

Private carveries welcome for groups of 12 or more

*Post Office - Lottery - Free to use ATM*

For all of our latest news offers and more coupons visit us at  
[@whitstonevillagestores](https://facebook.com/whitstonevillagestores) or just scan  
here >



**Greenfield**  
engineering



T +44 (0) 1409 254400 [vacancies@greenfieldengineering.co.uk](mailto:vacancies@greenfieldengineering.co.uk)

F +44 (0) 1409 254 898 **GREENFIELD ENGINEERING CO.UK**

### MOBILE LIBRARY VISITS BRIDGERULE

Village Hall 2.00pm Uplands 2.50pm

NEXT VISIT 10th July - 7th August





Professional  
Treatment of  
your Foot  
related  
problems in the  
comfort of your  
own home.

**Wendy Cook**

SAC DIP FHPT/ SAC FHPP

**Mobile Foot Health Practitioner**

Call Wendy on  
**01288 331311** or  
**07813772095**

**JON AND HEATING  
PLUMBING PIPER**

DISABILITY ADAPTATION SPECIALISTS

**T: 01288 381 536**

**M: 07825 698 529**

**Info@jonpiper.co.uk**



**City & Guilds**

# HOT TUBS!

IMMERSE YOURSELF IN  
TOTAL RELAXATION

POPULAR FOR MANY SPECIAL  
AND SOCIAL OCCASIONS



**HOLSWORTHY  
INFLATABLE HIRE  
HOT TUBS**

BIRTHDAYS,  
GARDEN PARTIES,  
STAG & HEN DO'S  
OR EVEN  
JUST AS THE  
ULTIMATE TREAT!



**BOOK NOW**

**CALL: 07957921607**

**WWW.HOLSWORTHYINFLATABLEHIRE.CO.UK**

**Bradford  
Pre-school**



**Term Time Day Care for 2-5 Year Olds**

Tax Free Childcare & other vouchers accepted

Funded places for 3 year olds available (and 30 hours extended  
entitlement & 2 year old funding, if criteria met)

**Bradford:**

Open 9am-3:30pm

Tuesdays, Wednesdays  
& Thursdays

**Bridgerule:**

Open 9am-3pm

Mondays, Wednesdays  
& Fridays

For more information,  
please call on:

Bradford **07792 501476**

Bridgerule **07879 955874**

email on [bradfordpsn@aol.com](mailto:bradfordpsn@aol.com) or visit our website

**[www.bradfordpreschool.btck.co.uk](http://www.bradfordpreschool.btck.co.uk)**





**CLUBS/CLASSES THAT REGULARLY MEET IN OUR HALL**

- Mon: Beat Bounce** To restart on Monday 3rd June Brooke 07715560912  
Use it or Lose it—2.00pm Gill Aston 01409 254642
- Tues: Village Coffee Club** 10.30am - every 2 weeks 01288381350/402  
**Table Tennis** From 2.00pm Contact Jill on 01409 254349  
**Dog Obedience** From 7.00pm Contact Christine on 01288 381104
- Wed: Art and Craft** (two weekly) 2.00pm Contact Joan 01288 381002
- Fri: Short Mat Bowls** - From 2.00pm Contact Alan on 01288 382988

**SALLY'S .MOBILE DOG GROOMING**



BATHING DRYING CLIPPING  
HANDSTRIPPING NAIL CLIPPING OF  
SMALL - MEDIUM DOGS. HOLSWORTHY /  
BUDE and surrounding area call

07969837552. Or 01288 382988 For a  
quote and chat about you dogs needs

**SKIPP AGA Servicing**

**07895 741 322**



Email: [paul@skippagaservicing.co.uk](mailto:paul@skippagaservicing.co.uk) or visit the website [skippagaservicing.co.uk](http://skippagaservicing.co.uk)